

Trees and powerlines



positive energy

Keeping you safe

Here at Energex, we believe that trees are an important part of our community and the environment. Trees and other vegetation make our homes pleasant places to be. They also provide much needed shade and are a home to wildlife.

However, there are hidden dangers. Powerlines can be hidden from sight by leaves and branches, making it dangerous to work around your home. Children climbing trees growing near powerlines and poles can also present life-threatening situations.

Energex's Trees and Powerlines Program works to maintain trees and vegetation for a safe community and to deliver a safe and reliable electricity supply to your home.

Our tree trimming program

Energex spends more than \$70 million each year to maintain trees and other vegetation around powerlines. Our trimming areas are based around postcodes. Each postcode in the high tree growth areas, 30 kilometres or less from the sea are targeted on an annual basis while postcodes further west are targeted less frequently. Each month, our quality assured contractors maintain vegetation away from over 1,000 kilometres of powerlines.

Energex contractors

Our contractors operate throughout the year, maintaining trees and other vegetation in suburbs serviced by the Energex electricity network.

If pruning is needed for vegetation on your property, you will be notified. Should a tree require removal inside your property, our contractor will seek your approval before removal.

Energex has a responsibility to maintain clearance zones around powerlines according to the Electrical Safety Act (2002).

Who is responsible for the powerlines?

Energex maintains powerlines to the first point of contact on your property – that is, to the house or building or first property pole. All lines beyond the first property pole belong to the property owner and tree clearance on those lines is the owner's responsibility.

Energex recommends hiring a qualified operator for tree trimming work around privately owned powerlines.

How will the trees be trimmed?

Our tree trimming contractors use nationally approved pruning techniques* to maintain a tree's health while encouraging growth to continue in a safer direction.

It is important to note, trees are not "shaped". Shaping trees places stress on the trees and can result in weak limbs and branches. Instead, we remove the foliage necessary to maintain a safe clearance around the powerlines.

Energex works with local councils on standards for the pruning of street trees.

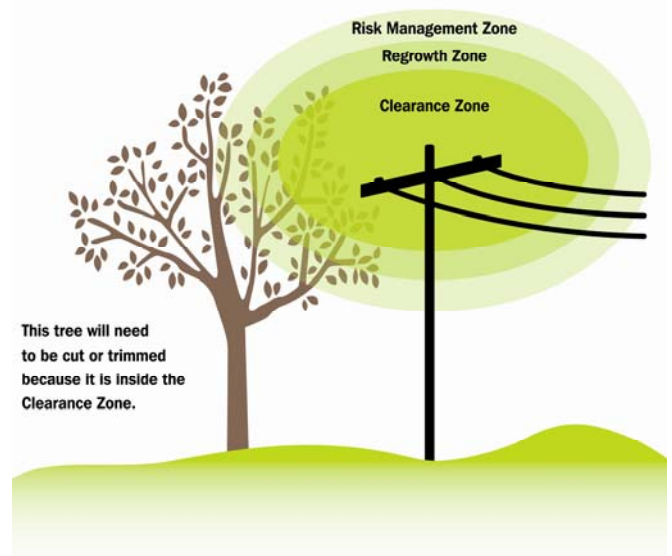
*Australian Standard AS4373 "Pruning of Amenity Tree"

How much clearance is required?

Clearance distances vary according to the type and rate of growth of the species. Clearance also varies according to the design of the electrical network.

There are three elements to the clearance that trees are required to be trimmed.

There is a clearance zone, this is the space surrounding powerlines that must be free from vegetation at all times; the regrowth zone, this is the space that must be maintained so the regrowth does not re-enter the clearance zone and thirdly, the risk management zone, the space in which unsound trees or limbs may pose a risk due to structural defects.



Trees and powerlines

Why do some trees need to be removed?

In some cases, it is necessary to remove a tree. Tree trimming may not address the problem or the tree is not suitable for growing under or near powerlines.

A tree may need to be removed because:

- a palm, planted directly under or close to the side of powerlines, is not able to be pruned.
- the tree is a tall growing species that is unsuitable under powerlines.
- the tree cannot be maintained away from the clearance zone and still comply with Australian standards.
- the tree is of a species that grows too quickly into the powerlines.

Energex works with your local council for tree removal on council property.

How you can assist

The Energex Safetree Program is about safe planting under and around powerlines. You can choose from nearly 100 species that won't grow too high under powerlines. For more information download the Safetree fact sheet on our website under *Trees & powerlines* at energex.com.au.

Before planting make sure you find out where your underground services are on your property. If you have permission to landscape on Council property, make sure you Dial Before You Dig on 1100 to avoid contact with underground services.

Contact Energex

To report loss of supply:

- 13 62 62

For electricity emergencies:

- 13 19 62

For general enquiries:

- energex.com.au
- custserve@energex.com.au
- 13 12 53 (8am to 5:30pm, Monday to Friday)
- Telephone interpreter service 13 14 50



Follow us on twitter.com/energex



Like us on facebook.com/energex

© Energex Limited 2012

® Energex and Energex Positive Energy are registered trade marks of Energex Limited

Energex Limited ABN 40 078 849 055
GPO Box 1461, Brisbane QLD 4001



positive energy