

# Safetree

Your Guide to powerline friendly approved plants



Part of Energy Queensland

Energex is pleased to provide the safetree planting guide for safe and easy planting in and around powerlines. This safetree guide shows you how to make planting within your property powerline friendly.

Trees and palms that interfere with powerlines are a safety risk and can interrupt your electricity supply.

You can help avoid the future need for trimming or removal of plants near powerlines by planting away from powerlines, or by planting powerline friendly approved plants.

Powerline friendly approved plants are those that will not grow to within two metres of the main powerlines that run along the street. When it comes to the service lines that connect to your home, the heights vary, so your planting should vary accordingly. Some safetree species grow to four metres in height. Be aware of the powerlines around your home when you position your plants and make sure you check the height they will grow to in maturity. Diagram 1, gives a good visual guide.

## Trees and powerlines should never meet

When you're planting trees and palms, it's important to select the right plant for the right place. Plants that grow into or near powerlines are more than inconvenient – they can pose a serious safety risk to you and your family and interrupt electricity supply.

However, there are many species of plants which can be grown safely under or near powerlines in the South East Queensland region.

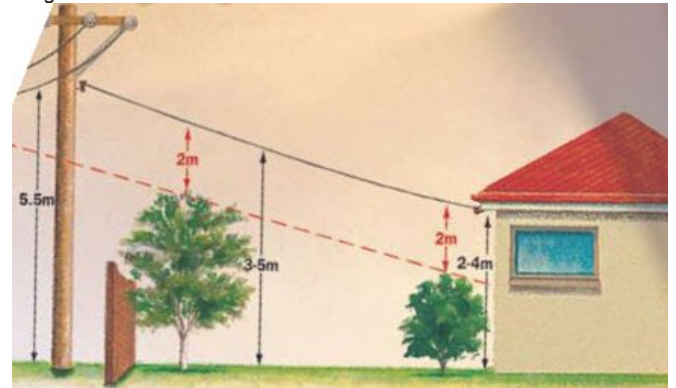
For safety reasons and to help ensure reliability of electricity supply, it is important to consult this safetree planting guide before planting under or near powerlines on your property. It is also important to contact your local council before planting on council property.

## Planting guidelines

- When mature, trees should not grow to within two metres of powerlines - that is, the powerline from the street to your home and the powerlines that run along your street or in easements (diagram 1).
- Before planting on Energex easements always contact Energex on 13 12 53 to check if there are any special planting requirements.
- If you want to plant taller plants, apply the 45-degree rule: plant at a distance from the powerline at least equal to the expected mature height of the plant (diagram 2).

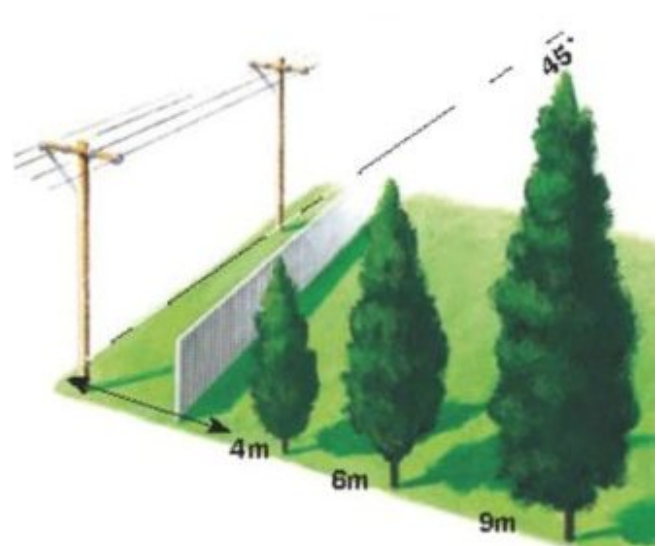
- Do not plant climbing trees or plants near the base of power poles. They can grow up into the lines and pose a safety risk or interrupt electricity supply.
  - Do not plant climbing trees or plants near the base of power poles. They can grow up into the lines and pose a safety risk or interrupt electricity supply.
- Do not plant palms within five metres of powerlines.
  - Do not plant palms within five metres of powerlines.

Diagram 1



Trees should not grow within two metres of powerlines.

Diagram 2



Plant at a safe distance from the power pole at least equal to the mature height of the tree.



## Species guide

The following table provides a guide to the native shrubs/ small trees that are generally suitable for planting under powerlines in South East Queensland because they generally only grow to four metres tall or less. It is not exhaustive and so other species not on the list may also be suitable.

Most herbaceous plants including ground covers, ferns and grasses are suitable and so have not been included here. The exception to this is some of the tall growing bamboo (a type of grass) species. Bamboo is not native to Australia.

Botanical name	Common name	Average height (metres)	Average width (metres)	Cultivation notes
<i>Acacia complanata</i>	Flat Stemmed Wattle	3	3	Well drained soils in full sun
<i>Acacia fimbriata</i>	Fringed Wattle	4	3	Hardy in most soil types except boggy areas; full sun
<i>Acacia sophorae</i>	Coastal Wattle	2.5	3	Best on well drained sandy soils in full sun
<i>Austromyrtus dulcis</i>	Midyim Berry	0.5	0.5	Hardy in most soils including sandy soils; full sun to part shade; prune growing tips to maintain bushiness; can be clipped as low hedge
<i>Austromyrtus inophloia</i> 'Blushing Beauty'	Thready Barked Myrtle	1.5	1	Most soils as long as adequate moisture is provided; best in part shade
<i>Austromyrtus tenuifolia</i>	Narrow Leaf Myrtle	2	1.5	Most soils as long as adequate moisture is provided; best in part shade; prune growing tips to maintain bushiness
<i>Baeckea frutescens</i>	Weeping Baeckea	2.5	1.5	Best on well drained sandy soils as long as adequate moisture is provided; in full sun; prune growing tips to maintain bushiness
<i>Banksia oblongifolia</i>	Dwarf Banksia	1.5	1.5	Best on well drained soils as long as adequate moisture is provided; in full sun
<i>Banksia robur</i>	Swamp Banksia	2	2	Most soils as long as adequate moisture is provided; best in full sun
<i>Banksia spinulosa</i> var. <i>collina</i>	Golden Candlesticks	2	1	Best on well drained sandy soils in full sun to part shade
<i>Breynia oblongifolia</i>	Native Coffee Bush	2	1	Most soils as long as adequate moisture is provided; best in part shade
<i>Bursaria spinosa</i>	Prickly Pine	3	1.5	Most soils as long as adequate moisture is provided; best in full sun to part shade; prune growing tips to maintain bushiness
<i>Callistemon</i> 'Little John'		1	1	Most soils as long as adequate moisture is provided during establishment
<i>Dodonaea viscosa</i>	Sticky Hop Bush	4	2.5	Most soils as long as adequate moisture is provided; best in full sun; prune growing tips to maintain bushiness; can be clipped as a hedge
<i>Graptophyllum excelsum</i>	Scarlet Fuchsia	4	1.5	Most soils as long as adequate moisture is provided during establishment; best in full sun to part shade; prune to shape and remove unwanted suckers
<i>Grevillea banksii</i>	Red Silky Oak	3	1.5	Most soils as long as adequate drainage is provided; best in full sun; remove dead flowers to maximise flowering and encourage bushiness; this species has given rise to numerous cultivated varieties (e.g. <i>Grevillea</i> 'Moonlight', <i>G.</i> 'Honey Gem'; <i>G.</i> 'Misty Pink') that are also suitable under powerlines
<i>Kunzea flavescens</i>	Kunzea	4	2	Most soils as long as adequate moisture is provided; best in full sun
<i>Leptospermum brachyandrum</i>	A tea tree	4	3	Most soils as long as adequate moisture is provided; best in full sun; suitable as a street tree if lower branches are removed to a height of 2.4 metres
<i>Leptospermum luehmannii</i>	Glass House Mountains Tea Tree	4	2	Most soils except boggy conditions; lower branches can be removed to form a small tree with an attractive multi-coloured trunk
<i>Leptospermum polygalifolium</i>	Wild May	4	1.5	Most soils as long as adequate moisture is provided; best in full sun; prune growing tips to maintain bushiness
<i>Melaleuca</i> 'Claret Tops'	A paperbark	1.5	1	Most soils as long as adequate moisture is provided; best in full sun
<i>Melaleuca</i> 'Sea Foam'	A paperbark	2.5	2	Most soils as long as adequate moisture is provided; best in full sun

Botanical name	Common name	Average height (metres)	Average width (metres)	Cultivation notes
<i>Melaleuca viminalis</i> (was <i>Callistemon viminalis</i> ) 'Wildfire'	Weeping Bottlebrush variety	4	2	Most soils as long as adequate moisture is provided; best in full sun; suitable as a street tree if lower branches are removed to a height of 2.4 metres; remove dead flowers to maximise flowering and encourage bushiness
<i>Melaleuca nodosa</i>	Prickly Leaf Paperbark	3	2	Most soils as long as adequate moisture is provided; best in full sun; suitable as a street tree if lower branches are removed to a height of 2.4 metres
<i>Melaleuca pachyphylla</i> (was <i>Callistemon pachyphyllus</i> )	Wallum Bottlebrush	2	1	Sandy soil with adequate moisture; best in full sun
<i>Melaleuca</i> 'Snowstorm'	A paperbark	2	1.5	Most soils as long as adequate moisture is provided; best in full sun
<i>Melaleuca viminalis</i> (was <i>Callistemon viminalis</i> ) 'Wildfire'	Weeping Bottlebrush variety	4	2	Most soils as long as adequate moisture is provided; best in full sun; suitable as a street tree if lower branches are removed to a height of 2.4 metres; remove dead flowers to maximise flowering and encourage bushiness
<i>Melastoma malabathricum</i> subsp. <i>malabathricum</i>	Blue Tongue	2	2	Most soils as long as adequate moisture is provided; best in full sun; can be pruned back hard annually to maximise flowering and encourage bushiness
<i>Myoporum acuminatum</i>	Coastal Boobialla	4	3	Most soils as long as adequate moisture is provided; best in full sun
<i>Pavetta australiensis</i>	Butterfly Bush	4	2	Most soils as long as adequate moisture is provided; best in full sun to part shade
<i>Pittosporum multiflorum</i>	Orange Thorn	2	1	Most soils as long as adequate moisture is provided; best in full sun to part shade
<i>Pittosporum revolutum</i>	Rusty Pittosporum	2.5	1	Most soils as long as adequate moisture is provided; best in full sun to part shade
<i>Sannantha bidwillii</i> (was <i>Babingtonia bidwillii</i> )		4	2	Most soils as long as adequate moisture is provided; best in full sun; prune growing tips to maintain bushiness
<i>Sannantha similis</i> (was <i>Babingtonia similis</i> was <i>Baeckea virgata</i> )	Twiggy Myrtle	3	2	Most soils as long as adequate moisture is provided; best in full sun; prune growing tips to maintain bushiness
<i>Westringia fruticosa</i>	Coastal Rosemary	1.5	1.5	Most soils as long as adequate drainage is provided; best in full sun; prune growing tips to maintain bushiness; can be clipped as a hedge; origin of numerous cultivated varieties (e.g. <i>Westringia fruticosa</i> 'Wynyabbie Gem', <i>W. fruticosa</i> 'Morning Light', <i>W. fruticosa</i> 'Smokey') that are also be suitable under powerlines

## Contact Energex

### To report loss of supply:

- 13 62 62

### For electricity emergencies:

- 13 19 62

### For general enquiries:

- energex.com.au
- custserve@energex.com.au
- 13 12 53 (8am to 5:30pm, Monday to Friday)
- Telephone interpreter service 13 14 50



Follow us on [twitter.com/energex](https://twitter.com/energex)



Like us on [facebook.com/energex](https://facebook.com/energex)

Energex Limited ABN 40 078 849 055  
GPO Box 1461, Brisbane QLD 4001